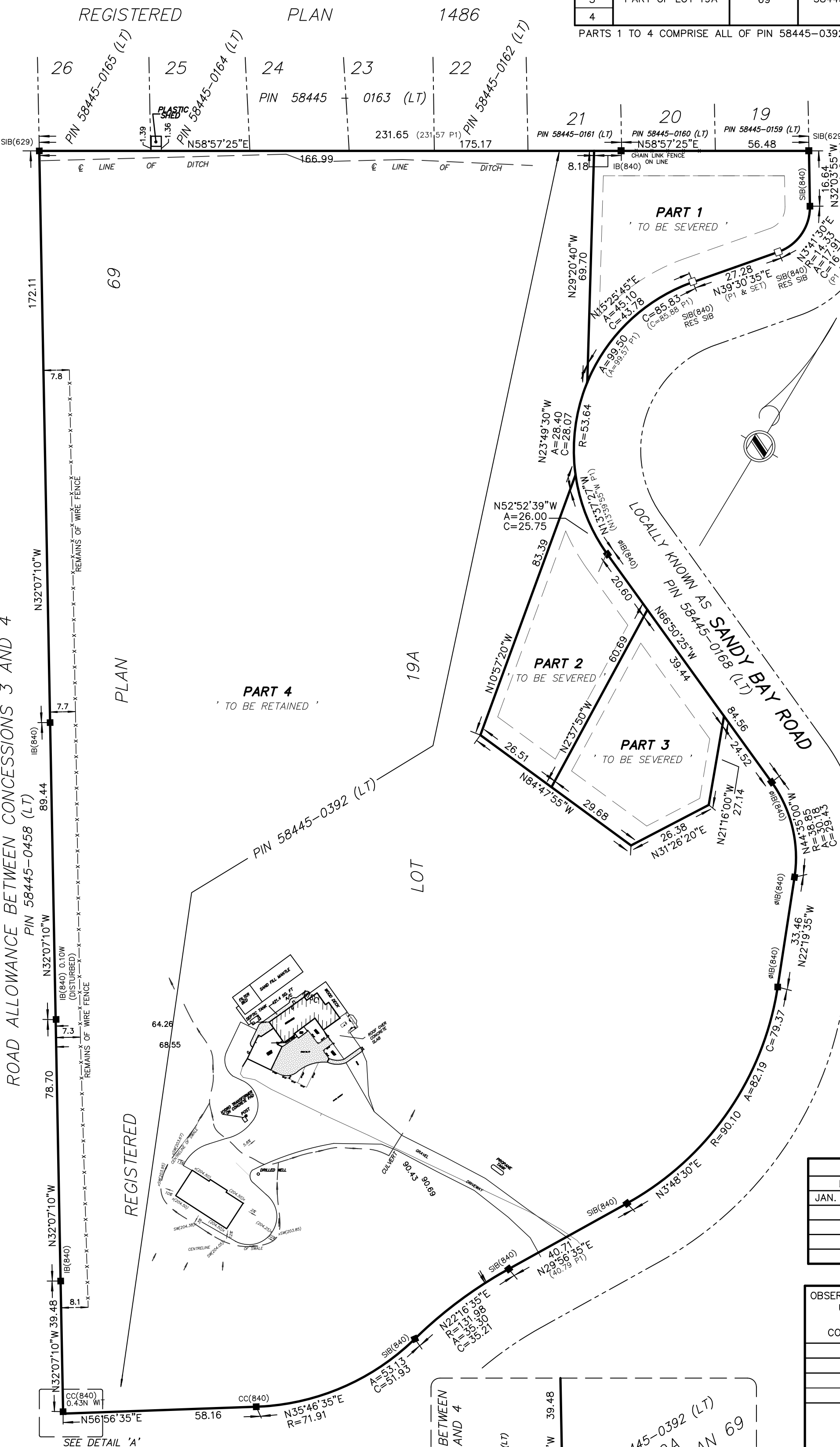


SCHEDULE				
PART	LOT / BLOCK	PLAN	PIN	AREA M <sup>2</sup>
1	PART OF LOT 19A	69	58445-0392 (LT)	2676.1
2				2114.1
3				2043.5
4				63156.8

PARTS 1 TO 4 COMPRISE ALL OF PIN 58445-0392 (LT)



PLAN OF SURVEY  
OF ALL OF  
**LOT 19A**  
**REGISTERED PLAN 69**  
(GEOGRAPHIC TOWNSHIP OF TAY)  
**TOWN OF PENETANGUSHENE**  
COUNTY OF SIMCOE

SCALE 1 : 1000  
25 20 15 10 5 0 25 50 75 Metres

THE INTENDED PLOT SIZE OF THIS PLAN IS 559mm IN WIDTH BY 432mm IN HEIGHT WHEN PLOTTED AT A SCALE OF 1: 1000.

RAIKES GEOMATICS INC.  
2021

**METRIC**  
DISTANCES AND COORDINATES SHOWN ON THIS PLAN ARE IN METRES AND CAN BE CONVERTED TO FEET BY DIVIDING BY 0.3048

**BEARING NOTE**  
BEARINGS HEREON ARE UTM GRID BEARINGS AND ARE DERIVED FROM OBSERVED REFERENCE POINTS (ORPs) A AND B BY REAL TIME NETWORK (RTN) OBSERVATIONS AND ARE REFERRED TO THE CENTRAL MERIDIAN 81°W IN ZONE 17 BASED ON NAD83 (CSRS) (2010 EPOCH).

**BEARING ROTATION**  
FOR BEARING COMPARISONS, A ROTATION OF 0°48'25" COUNTERCLOCKWISE WAS APPLIED TO PLAN 51R-6181 (P1)

**DISTANCE NOTE**  
DISTANCES SHOWN ON THIS PLAN ARE HORIZONTAL GROUND DISTANCES AND CAN BE CONVERTED TO GRID DISTANCES BY MULTIPLYING BY THE COMBINED SCALE FACTOR OF 0.999667.

- LEGEND**
- DENOTES MONUMENT FOUND
  - DENOTES MONUMENT PLANTED
  - IB DENOTES IRON BAR
  - SIB DENOTES STANDARD IRON BAR
  - ØIB DENOTES ROUND IRON BAR
  - CC DENOTES CUT CROSS
  - Meas. DENOTES MEASURED
  - 629 DENOTES V.R. DAVIES, OLS
  - 840 DENOTES J.M. HARVEY, OLS
  - P1 DENOTES PLAN 51R-6181
  - RES DENOTES RESTORED IN ACCORDANCE WITH SECTION 1.5 OF THE NATIONAL STANDARDS FOR THE SURVEY OF CANADA LANDS
  - WIT DENOTES WITNESS

ZONING INFORMATION				
ZONE DESIGNATION	PERMITTED	PROVIDED PART 1	PROVIDED PART 2	PROVIDED PART 3
RURAL (RU)				
LOT AREA (sq.m.)	2000	2676	2134	2074
LOT FRONTAGE (m)	35.0	* > 35.0	35.0	35.0

\* MAY REQUIRE FRONTAGE DEFINITION CLARIFICATION

REVISION TABLE		
DATE	BY	COMMENT
JAN. 18, 2023		RELEASED FOR ENVIRONMENTAL IMPACT STUDY

OBSERVED REFERENCE POINTS (ORPs) ARE DERIVED FROM GPS OBSERVATIONS USING THE CAN-NET VRS NETWORK, UTM ZONE 17 (81° LONGITUDE) NAD 83 CSRS (1997 EPOCH) COORDINATES TO URBAN ACCURACY PER SEC. 14 (2) OF O.REG 216/10		
UTM NAD 83 CSRS COORDINATE TABLE		
POINT ID	NORTHING	EASTING
ORP A	4962005.90	587279.61
ORP B	4962253.89	586998.50
COORDINATES CANNOT, IN THEMSELVES, BE USED TO RE-ESTABLISH CORNERS OR BOUNDARIES SHOWN ON THIS PLAN		

W:\PROJECTS\PROJECTS_2015\155314\MSCAD\155314_RP2.DWG		
DRAWN BY :	EKU	PROJECT No. 155314
CHECKED BY :	PTR	



**RAIKES**  
GEOMATICS INC.

Barrie Office: (705) 722 - 6222 642 Welham Road, Barrie, ON L4N 9A1  
Midland Office: (705) 526 - 7552 529 Elizabeth Street, Midland, ON L4R 2A2  
Email : info@survey4u.com

**SURVEYOR'S CERTIFICATE**

I CERTIFY THAT:

- THIS SURVEY AND PLAN ARE CORRECT AND IN ACCORDANCE WITH THE SURVEYS ACT, THE SURVEYORS ACT, THE LAND TITLES ACT, AND THE REGULATIONS MADE UNDER THEM.
- THE SURVEY WAS COMPLETED ON THE ##th DAY OF XXXX, 2021.

DATE

PETER T. RAIKES, BSc., CLS, MRICS  
ONTARIO LAND SURVEYOR

THIS PLAN OF SURVEY RELATES TO AOLS PLAN SUBMISSION FORM NUMBER #####.

DETAIL 'A'  
SCALE: NOT TO SCALE