



County of Simcoe
 Transportation and
 Engineering
 1110 Highway 26,
 Midhurst, Ontario L0L 1X0

Main Line (705) 726 9300
 Toll Free 1 866 893 9300
 Fax (705) 727 7984
 simcoe.ca



NOTICE

**County of Simcoe
 County Road 93 Roundabout and Multi-Use Trail Phase 3
 Construction Newsletter No. 3**

**Simcoe County Engineering, Planning & Environmental Division
 Transportation and Engineering Department**

June 28, 2021

Notice of Vindin Street Closure Starting July 7, 2021

Golf Link Road Opening

Please be advised that Golf Link Road will be reopened starting on **July 7, 2021**.

A minimum of two paved lanes (one each way) will remain open on Golf Link Road during construction.

Temporary Traffic Signals will be activated prior to Golf Link Road opening to direct motorists entering and exiting Golf Link Road from County Road 93 (CR 93).

Vindin Street Closure

Please be advised that Vindin Street will be temporarily closed starting on **July 7, 2021** for construction. The closure will last for approximately 18 weeks.

Vindin Street will be inaccessible from CR 93 during the closure.

Access to residences and businesses on Vindin Street will be maintained at all times.

Detour routes will be set up and advanced warning signs will be installed to warn motorists of the road closure.

County Road 93

Temporary bypass lanes will be in place with a minimum of two paved lanes (one each way) on CR 93 during construction.

Temporary Traffic Signals will be activated at the CR 93 and Golf Link Road intersection to direct motorists.

Detour Routes

Detour routes to access Vindin Street during the closure are as follows:

- Yonge Street to First Street to Bay Street to Fourth Street to Vindin Street; and
- Thompsons Road to Robert St East to Fuller Avenue to Harbourview Drive to Vindin Street.

Designated detour route maps have been included with this newsletter.

How will I get to My Residence/Business?

The Contractor will maintain access to your residence/business.

The contractor will give prior notice of any access restrictions to the residences/businesses.

If you have any special needs for wheelchair access please advise the R.J. Burnside & Associates Limited Construction Inspector (Lyle Simpson).

Access for emergency vehicles will be maintained at all times.

Safety

Construction involves the use of heavy equipment and the unavoidable creation of obstacles.

We ask that you caution your children to stay clear of the working area.

We ask that you take extra caution during the construction period to ensure everyone's safety.

Who Do I Call If I Have a Problem?

If you have any questions regarding the construction please call:

Field:

R.J. Burnside & Associates Limited
 Construction Inspector
 Lyle Simpson
 Mobile – (705) 715-2521

Georgian Paving
 Site Supervisor
 Nathan Brown
 Office – (705) 733-3336
 Mobile – (705) 441-5164

County of Simcoe
 Project Engineer
 Claire Walker
 Office – (705) 726-9300 Ext. 1168
 Mobile – (705) 795-9182

Office:

R.J. Burnside & Associates Limited
 Contract Administrator
 Kevin Empringham
 Office – (705) 797-4364
 Mobile – (705) 795-3263

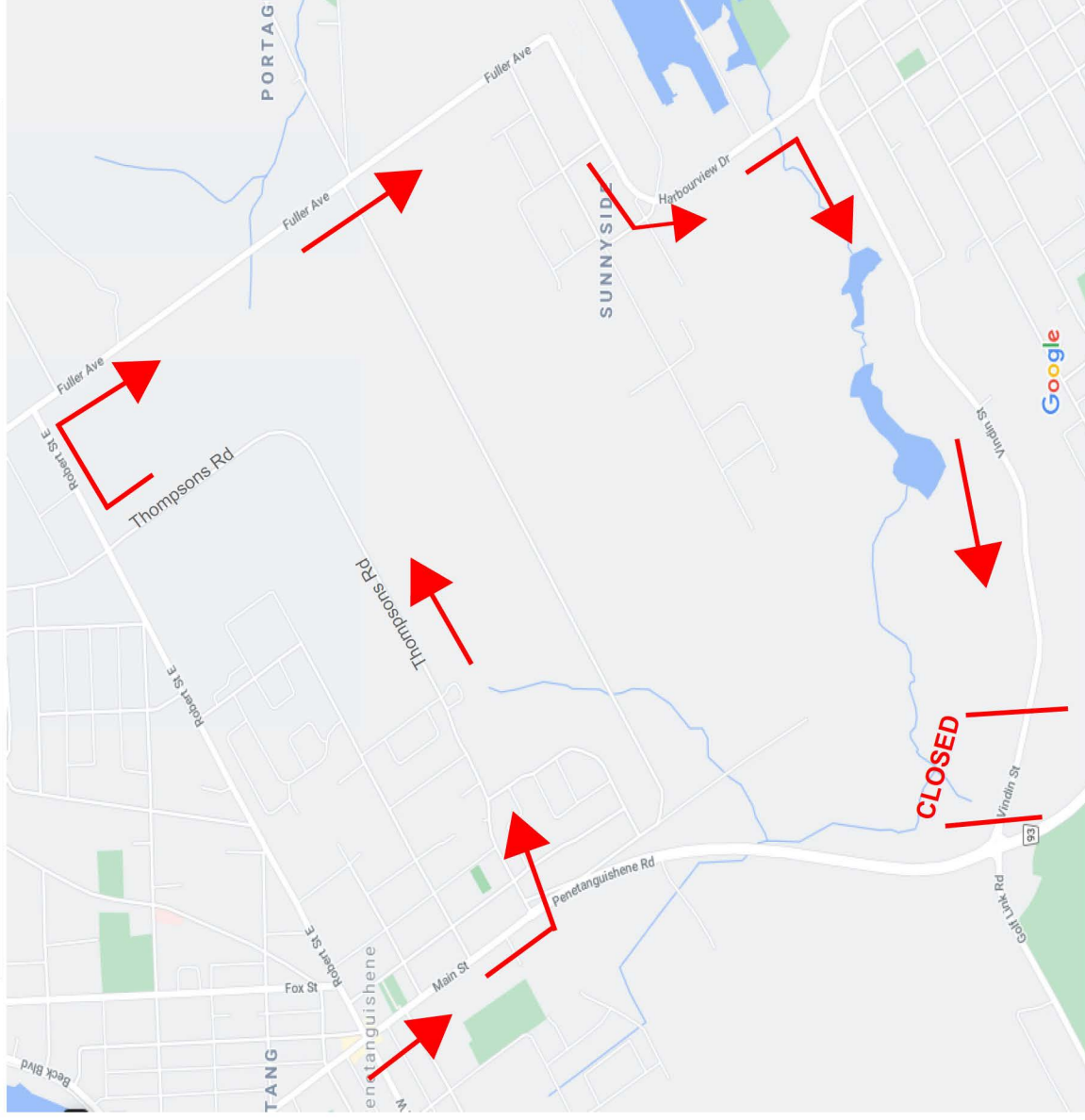
Georgian Paving
 Project Manager
 Tim Fawcett
 Office – (705) 733-3336
 Mobile – (705) 333-5781

County of Simcoe
 Manager, Transportation
 Construction
 Julie Scruton, P.Eng.
 Office – (705) 726-9300 Ext. 1176

Vindin Street Closure

Detour Route
Southbound from CR 93

Thompsons Road to Robert Street East to Fuller Avenue to Harbourview Drive to Vindin Street



Vindin Street Closure

Detour Route
Northbound from CR 93

Yonge Street to First Street to Bay Street to Fourth Street to Vindin Street

